

Now Available!

Heartland® Enclosures in Color



The most innovative, durable and reliable polycarbonate enclosures - now available in color!

New AttaBox Heartland enclosures in color provide superior environmental protection and aesthetically enhance installations. Ideal for promotion of OEM products, they command visual attention in applications requiring color.

IDEAL FOR INDUSTRIAL & COMMERCIAL APPLICATIONS REQUIRING ENCLOSURES THAT BLEND IN OR STAND OUT

SUPERIOR INDOOR AND OUTDOOR PROTECTION AGAINST:



RAIN, SLEET & SNOW



SPLASHING & HOSE DIRECTED WATER



SUBMERSION



SUN/UV



FLAMES

APPLICATION:

- Extremely tough and durable, Heartland Series enclosures in color are used in both outdoor and indoor applications. They provide superior environmental protection for customer equipment and aesthetically enhance installations. They are ideal for promotion of OEM products, and command visual attention in applications requiring color.
- **White** – Has a high level of reflectance which can be used to minimize heat gain in areas with increased sunlight exposure, and offers an aesthetically appealing, clean look
- **Black** – Can be used in darker areas to blend-in with equipment or environment
- **Red** – Can be used in a variety of applications including fire and emergency systems
- **Yellow** – Often used where high visibility and facility safety is required
- **Blue** – Is often used in remote monitoring, data and security applications

BENEFITS:

- Appealing aesthetics and increased visibility to improve customer promotion and branding
- Versatile, innovative features including a panel management system maximizing internal space, T-Slot design for side wall mounting, and octagon mounting feet allowing for unique angling and fit with equipment.
- Impact and corrosion resistant design with full polycarbonate material construction.

INNOVATIONS & FEATURES:

- In addition to standard gray, Heartland is now available in 5 standard colors: White, Black, Red, Yellow, and Blue
- Available in a wide range of sizes from 6" x 6" to 20" x 16"
- Lightweight, high-Impact rated polycarbonate material construction with molded-in colors that will not chip or scrape away
- Aesthetically appealing glossy finish
- Innovative panel management and side mount capabilities allows full use of interior space to maximize component placement and design flexibility.
- Clear with smoke tint or Opaque cover options
- Stainless steel latches as standard
- Fully nonmetallic hinge does not penetrate inside enclosure
- "One-solution" Enclosure can be configured as a screw cover or hinged cover
- Thick, robust side wall construction eliminates side wall flexing
- Built in DIN Rail mounting embosses in the back of the enclosure
- Sliding T-Nut allows for infinite panel adjustment back to front
- 4 mounting feet, cover screws, mounting caps, back panel screws & washers included
- Multi-directional mounting feet allow mounting flexibility
- Aluminum back panel and swing out panel mounting options
- Custom digital printing and modifications are available upon request through our value-add Modright program. Please consult factory.

MATERIALS:

- Enclosure and Covers: Polycarbonate with UV inhibitors
- Gasket: Robotically applied Foam-In-Place seamless polyurethane
- Stainless steel latches

RATINGS & LISTINGS:

- cULus Listed per file #E319779
- IEC 60529: UL Listed per file #E362920 IP66
- UL50, UL50e, UL508A
- Type 1, 3R, 4, 4X, 12
- Operating Temperature Rating: -40°F to +248°F (-40°C to +120°C)
- Outdoor UV Exposure (UL 746C) (f1) Rated
- UL's best rating, an "f1" per UL 746C (resin has passed tests for UV exposure and water immersion)

 **AttaBox**
A ROBROY ENCLOSURES® BRAND

Email quotes@robroyenclosures.com to order • attabox.com

CATALOG NUMBERS AND DIMENSIONS:

Heartland®

White, Black, Red, Yellow, Blue

OPAQUE COVER ENCLOSURE WITH STAINLESS STEEL LATCHES

SIZE	WHITE PART#	BLACK PART#	RED PART#	YELLOW PART#	BLUE PART#
6 X 6 X 4	WH-AH664SS	BK-AH664SS	RD-AH664SS	YW-AH664SS	BL-AH664SS
8 X 6 X 4	WH-AH864SS	BK-AH864SS	RD-AH864SS	YW-AH864SS	BL-AH864SS
8 X 8 X 4	WH-AH884SS	BK-AH884SS	RD-AH884SS	YW-AH884SS	BL-AH884SS
10 X 8 X 4	WH-AH1084SS	BK-AH1084SS	RD-AH1084SS	YW-AH1084SS	BL-AH1084SS
10 X 8 X 6	WH-AH1086SS	BK-AH1086SS	RD-AH1086SS	YW-AH1086SS	BL-AH1086SS
10 X 10 X 6	WH-AH10106SS	BK-AH10106SS	RD-AH10106SS	YW-AH10106SS	BL-AH10106SS
12 X 10 X 6	WH-AH12106SS	BK-AH12106SS	RD-AH12106SS	YW-AH12106SS	BL-AH12106SS
14 X 12 X 6	WH-AH14126SS	BK-AH14126SS	RD-AH14126SS	YW-AH14126SS	BL-AH14126SS
16 X 14 X 8	WH-AH16148SS	BK-AH16148SS	RD-AH16148SS	YW-AH16148SS	BL-AH16148SS
18 X 16 X 4	WH-AH18164SS	BK-AH18164SS	RD-AH18164SS	YW-AH18164SS	BL-AH18164SS
18 X 16 X 10	WH-AH181610SS	BK-AH181610SS	RD-AH181610SS	YW-AH181610SS	BL-AH181610SS
20 X 16 X 8	WH-AH20168SS	BK-AH20168SS	RD-AH20168SS	YW-AH20168SS	BL-AH20168SS

Heartland®

White, Black, Red, Yellow, Blue

CLEAR COVER ENCLOSURE WITH STAINLESS STEEL LATCHES

SIZE	WHITE PART#	BLACK PART#	RED PART#	YELLOW PART#	BLUE PART#
6 X 6 X 4	WH-AH664CSS	BK-AH664CSS	RD-AH664CSS	YW-AH664CSS	BL-AH664CSS
8 X 6 X 4	WH-AH864CSS	BK-AH864CSS	RD-AH864CSS	YW-AH864CSS	BL-AH864CSS
8 X 8 X 4	WH-AH884CSS	BK-AH884CSS	RD-AH884CSS	YW-AH884CSS	BL-AH884CSS
10 X 8 X 4	WH-AH1084CSS	BK-AH1084CSS	RD-AH1084CSS	YW-AH1084CSS	BL-AH1084CSS
10 X 8 X 6	WH-AH1086CSS	BK-AH1086CSS	RD-AH1086CSS	YW-AH1086CSS	BL-AH1086CSS
10 X 10 X 6	WH-AH10106CSS	BK-AH10106CSS	RD-AH10106CSS	YW-AH10106CSS	BL-AH10106CSS
12 X 10 X 6	WH-AH12106CSS	BK-AH12106CSS	RD-AH12106CSS	YW-AH12106CSS	BL-AH12106CSS
14 X 12 X 6	WH-AH14126CSS	BK-AH14126CSS	RD-AH14126CSS	YW-AH14126CSS	BL-AH14126CSS
16 X 14 X 8	WH-AH16148CSS	BK-AH16148CSS	RD-AH16148CSS	YW-AH16148CSS	BL-AH16148CSS
18 X 16 X 4	WH-AH18164CSS	BK-AH18164CSS	RD-AH18164CSS	YW-AH18164CSS	BL-AH18164CSS
18 X 16 X 10	WH-AH181610CSS	BK-AH181610CSS	RD-AH181610CSS	YW-AH181610CSS	BL-AH181610CSS
20 X 16 X 8	WH-AH20168CSS	BK-AH20168CSS	RD-AH20168CSS	YW-AH20168CSS	BL-AH20168CSS

Accessories: 4 mounting feet, cover screws, mounting caps, back panel screws & washers (Included with enclosure - Replacement Only)

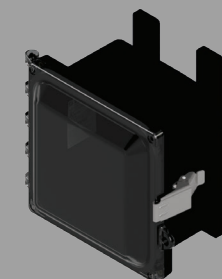
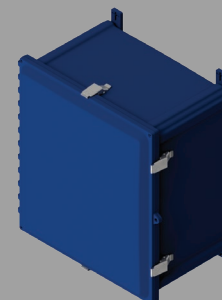
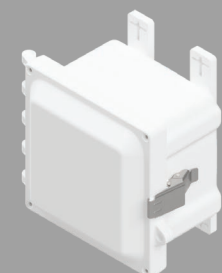
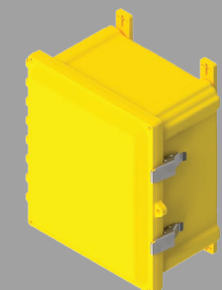
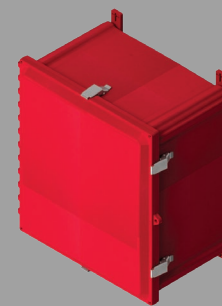
WH-AHAK BK-AHAK RD-AHAK YW-AHAK BL-AHAK

Aluminum Panels

BACK PANEL PART #	SWING KIT PART #
BP66A	AH606SPK
BP86A	AH806SPK
BP88A	AH808SPK
BP108A	AH1008SPK
BP108A	AH1008SPK
BP1010A	AH1010SPK
BP1210A	AH1210SPK
BP1412A	AH1412SPK
BP1614A	AH1614SPK
BP1816A	AH1816SPK
BP1816A	AH1816SPK
BP2016A	AH2016SPK

Aluminum Panels

BACK PANEL PART #	SWING KIT PART #
BP66A	AH606SPK
BP86A	AH806SPK
BP88A	AH808SPK
BP108A	AH1008SPK
BP108A	AH1008SPK
BP1010A	AH1010SPK
BP1210A	AH1210SPK
BP1412A	AH1412SPK
BP1614A	AH1614SPK
BP1816A	AH1816SPK
BP1816A	AH1816SPK
BP2016A	AH2016SPK



*Dimensional data and all accessories can be found online at attabox.com or in our full catalog

AttaBox
A ROBROY ENCLOSURES® BRAND

500 Maple Street, Belding, MI 48809
E: CSR@robroyenclosures.com P: 616.794.0700

Email quotes@robroyenclosures.com to order • attabox.com